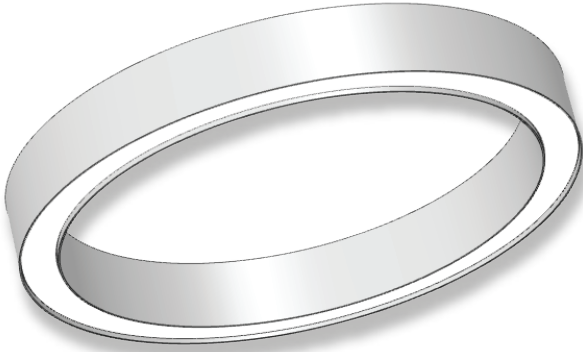


# ORBIT BEAM - S3 (INDIRECT, DIRECT AND INDIRECT/DIRECT) RING PATTERNS



2.795" Wide X 5.118" High

PAL Architectural Lighting presents the new LASSO ORBIT BEAM - S3. The BEAM - S3 is available in three distinct sized round patterns, and mounts to drywall, metal pan, concrete, timber and T-Bar grid ceilings. ORBIT BEAM - S3 is also available in Direct-only, Indirect-only & Indirect/Direct configurations.

At only 2.795" in width, the ORBIT BEAM - S3 is a sleek, compact form that creates a minimal spatial footprint, while also creating a striking architectural statement.

Type:

Project Name:

Catalog Number:

## SPECIFICATIONS

### Housing

Constructed of extruded aluminum and available in three standard elliptical-shape patterns. \*See pattern dimensions at left.

### Lens/Diffusers - Indirect

(FAL) Frosted acrylic snap-in lens, with magnetic retention location locks.

(PL) Heavy-duty polycarbonate snap-in lens, with magnetic retention location locks. Lens is IK08 rated for impacts.

### Lens/Diffusers - Direct

(FAL) Frosted acrylic snap-in lens, with magnetic retention location locks.

(PL) Heavy-duty polycarbonate snap-in lens, with magnetic retention location locks. Lens is IK08 rated for impacts.

### Finish

Standard housing finish is textured matte white or textured matte black. Custom colors are also available.

### Gear Tray/LED Module

Removeable gear tray is constructed of solid aluminum, has LED module attached and is designed for quick and simple 'single person' installation or removal.

### Color Temperatures/CRI

LED light sources are available for the following Co-ordinated Color Temperatures (CCT):

**Standard:** 3000K, 3500K, 4000K, & 5000K

**Tunable White:** Variable CCT range from 2700K thru 6500K.

**RGBW:** (Red, Green, Blue, White) color-changing logic module is rated at 90+ CRI and is available in standard High Output and Medium Output.

Contact factory for available custom outputs.

**Color Rendering Index (CRI):** Standard: 90

### Warranty

10-year limited warranty. No other warranty is expressed or implied. Complete warranty terms can be accessed by visiting:

<https://pal-lighting.com/company/warranty>

### Certifications

Fixtures are UL listed for use in 'Dry or Damp Applications'. Fixtures are CE listed for the European market. Fixtures also carry an EMC rating (electromagnetic compatibility). IP20 rated.

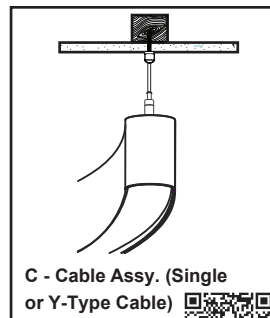


34" Diameter

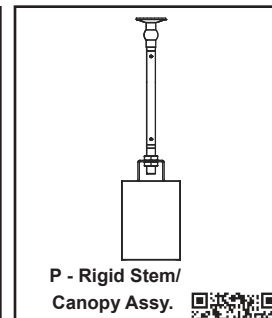
66" Diameter

96" Diameter

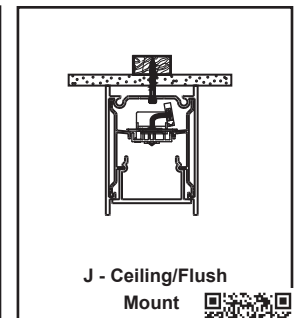
### Mountings



\*Link to Cable Instructions



\*Link to Stem Instructions



\*Link to Ceiling Mt Instructions



**ORDERING GUIDE**



Series	Standard Outputs	Color Temp. (CCT)	Color Render	Round Patterns	Mounting
LOB3-D LASSO ORBIT BEAM - S3 DIRECT	<b>Direct-Only or Indirect-Only:</b> <b>HO</b> High Output 875 Lms/Ft	<b>Standard:</b> <b>K30</b> 3000 Kelvin <b>K35</b> 3500 Kelvin <b>K40</b> 4000 Kelvin <b>K50</b> 5000 Kelvin	<b>90</b> 90 CRI	<b>34"</b> 34" Diameter <b>66"</b> 66" Diameter <b>96"</b> 96" Diameter	<b>C</b> Cable : Single Cable <b>CY</b> Cable : Y-Type Split Cable <b>P</b> Rigid Stem/Canopy Assy <b>J</b> Ceiling/Flush Mount
LOB3-I LASSO ORBIT BEAM - S3 INDIRECT	<b>MO</b> Medium Output 475 Lms/Ft	<b>Optional:</b> <b>TW</b> 2700K thru 6500K (Tunable White) <b>RGBW</b> Red/Green/Blue/White (Color Changing)			
LOB3-I/D LASSO ORBIT BEAM - S3 INDIRECT/DIRECT	<b>CO</b> **Custom Output  <b>Indirect/Direct:</b> <b>HO/HO</b> High Output - (Up/Dn) 1750 Lms/Ft (Combined) <b>MO/MO</b> Medium Output - (Up/Dn) 950 Lms/Ft (Combined) <b>CO/CO</b> **Custom Output				



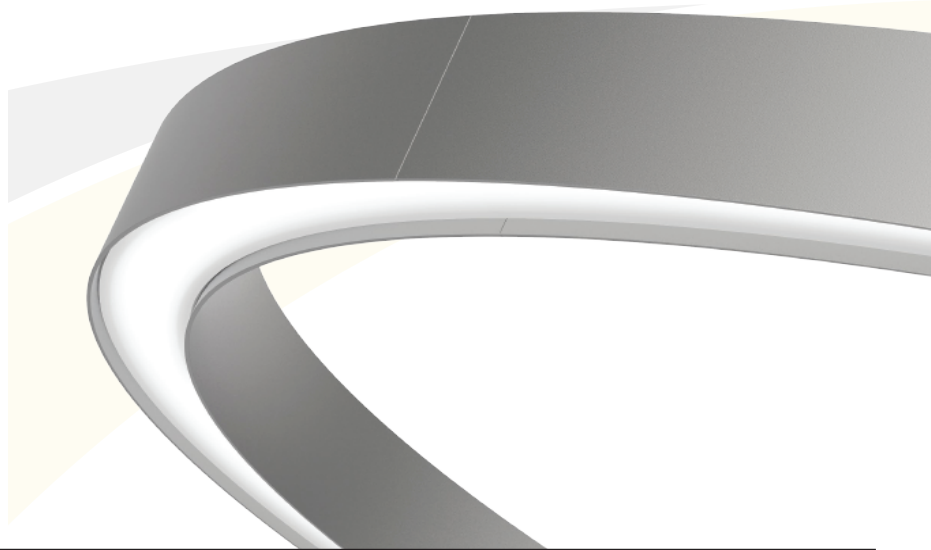
Lenses-Indirect	Lenses-Direct	Housing Color	Voltage	Drivers - Dimming	Drivers - Tunable White / RGBW
<b>FAL</b> Frosted Acrylic Lens <b>PL</b> Polycarbonate Lens	<b>FAL</b> Frosted Acrylic Lens <b>PL</b> Polycarbonate Lens	<b>F01M</b> Textured Matte White (Standard) <b>F11M</b> Textured Matte Black (Standard) <b>FCC</b> Custom Color - RAL Color # ____	<b>UNV</b> Universal Voltage (120V - 277V)	<b>DIM10</b> Dimming 100% to 10% <b>DIM5</b> Dimming 100% to 5% <b>DIM1</b> Dimming 100% to 1% <b>DIM0</b> Dimming 100% to 0%	<b>TW</b> DALI protocol driver - Tunable White Color Tuning <b>RGBW</b> DMX protocol driver - RGBW Red/Green/Blue/White Color Tuning



Sensor Options	Emergency Options	Control Options
<b>OCC</b> Occupancy/Motion Sensor <b>DS</b> Daylight/Photocell Sensor	<b>EBPH</b> Emergency Battery Pack	<b>0-10V</b> 0-10V protocol <b>DALI</b> DALI protocol (TW) <b>DMX</b> DMX protocol (RGBW) <b>CASAMBI</b> Casambi protocol wireless control system

**Notes:**

1. All fixtures are factory pre-wired for a single circuit. Provisions for multiple switching/circuiting is optional.
2. Straight fixtures and 48R (48" Radius) arc segments contain integral drivers. Arc segments below 48R have remote drivers.
3. Standard power supply (driver) is UL recognized, and is available with 0-10V dimming capability as well as 120 thru 277 universal voltage.
4. Tunable White power supply (driver) is UL recognized, and is compatible with DALI control protocols.
5. RGBW power supply (driver) is UL recognized, and is compatible with DMX control protocols.
6. LASSO ORBIT BEAM - S3 ring fixture patterns are IP20 rated - for indoor use only.

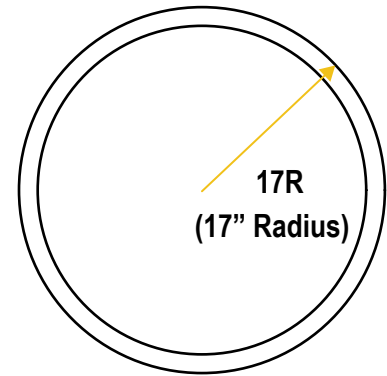


# ORBIT BEAM - S3 RING PATTERNS

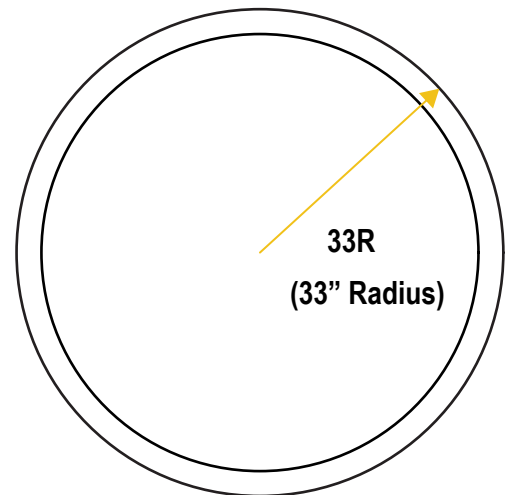
## Standard Diameter Options

**DATA TABLE**

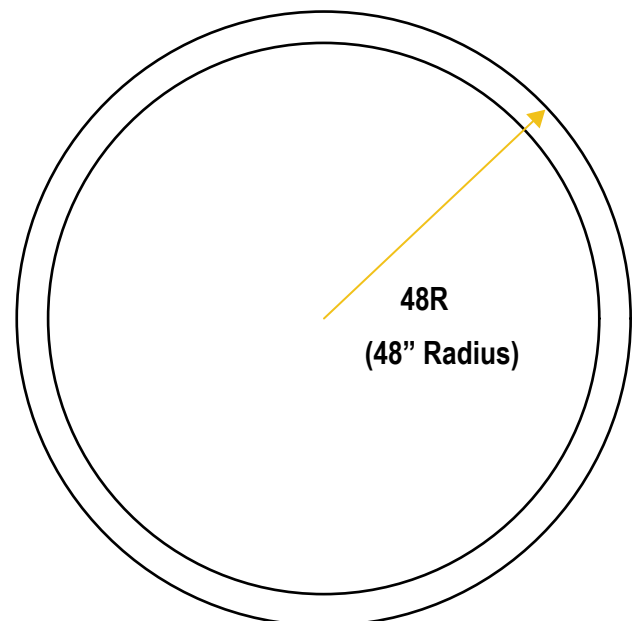
Optic Module LED Engine	Optimized	CRI	90+
		Lumen Maintenance	82,000 Hours
Warranty	10 years		
Dimensions	Profile size: 2.795" W X 5.118" H - Overall Patterns: 34", 66" and 96"		
Weight	Orbit 34" Pattern: 29 lbs. / Orbit 66" Pattern: 56 lbs / Orbit 96" Pattern: 83.7 lbs.		
IP Rating	IP20 (dry indoor application only)		
Compatible ceiling	Suitable for drywall ceilings, metal pan, concrete, timber & T-Bar Grid ceilings		
Mounting	Single drop & Y-Type Cables, Rigid Stem, Surface/Ceiling Mount		



**34" Diameter**



**66" Diameter**

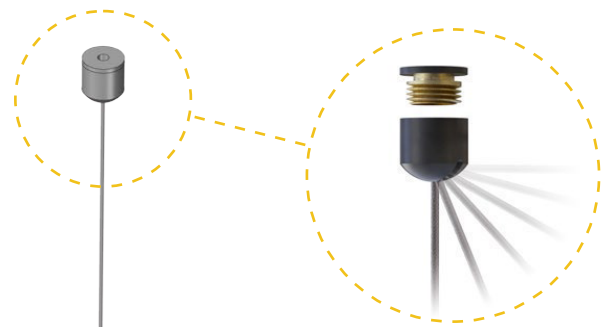


**96" Diameter**

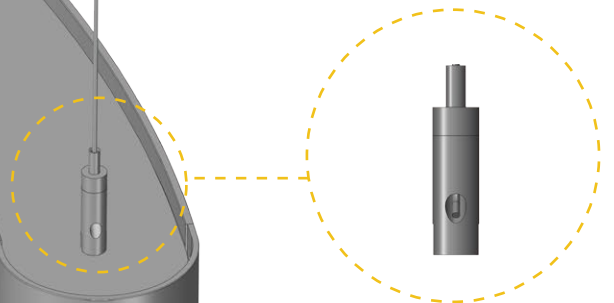
## ORBIT BEAM - S3 RING PATTERNS

### Fully Adjustable Cable/Rollerball Suspension

A smart suspension system that can be mounted on any surface, whether flat or sloped ceiling.



Custom rollerball cable barrel allows fixture to hang plumb, even on sloped surfaces.



Adjustable cable barrel allows for suspension adjustment up or down.